

User's Manual of BTGP-38KM
Bluetooth GPS Data Logger

V1.0

I Instruction to Product

1. Summary

BTGP-38KM, a high-tech product combines the advanced Bluetooth technology and GPS technology. Through, Bluetooth technology, you can receive and storage GPS data through intelligent mobile phone, PDA, laptop and desktop. Can be used for location、 navigation、 read the history of track records, and other applications



2. Feature

1. Very low electricity cost and work up to maximum 18.5 hours
2. High-sense, good-performance GPS chip, receiving 65 satellites simultaneously
3. Accord with Bluetooth 2.0 Specification CLASS 2
4. Support Bluetooth serial communication Profile (SPP Profile)
5. Compatible with li-battery and charger of Nokia mobile (e.g.N70)
6. 3 LED indicate statues of Bluetooth, GPS and recharging
7. Support the baud rate 9600bps in NMEA-0183 standard
8. Can store the equivalent of 300 hours history GPSS track information.
9. Small-size, humanized design, portable, cute appearance

3. Technical Index

General Index

Receivable frequency L1, 1575.42MHz

C/A code 1.023MHz

Channel 65

Sensibility

Search -151dBm

Track -160dBm

Precision

Location 7m CEP 90% , 3m CEP 50%(SA OFF)

Velocity 0.1m/s

Location time

Hot startup 1s, average

Warm startup 35s, average

Cold startup 40s, average

Dynamic condition

Altitude Max 10 km

Horizontal speed Max 515m/s

Acceleration Max 4g

GPS protocol

NMEA-0183 ASCII protocol

Default NMEA GGA, GSA, GSV and RMC, (VTG, GLL and RMS optional)

9600bps baud rate, 8 data bits, 1 stop bit, no check bit

Bluetooth index

Bluetooth code V2.0+EDR

Emission power Class 2 (4dBm max)

Receiving sensibility -80dBm

Communication distance 10m typical (free space)

Profile Communication Profile Serial Port Profile (SPP)

Power consumption

Working current about 60mA average

Working voltage 3.7V ~ 4.2V

Chargeable voltage 5.5V

Battery

Recharge time 2.5hrs typical

Working time about 18.5hrs, track after the charging is full

Environment

Working temperature -40 to +85

Storage temperature -40 to +150

II Hardware Features

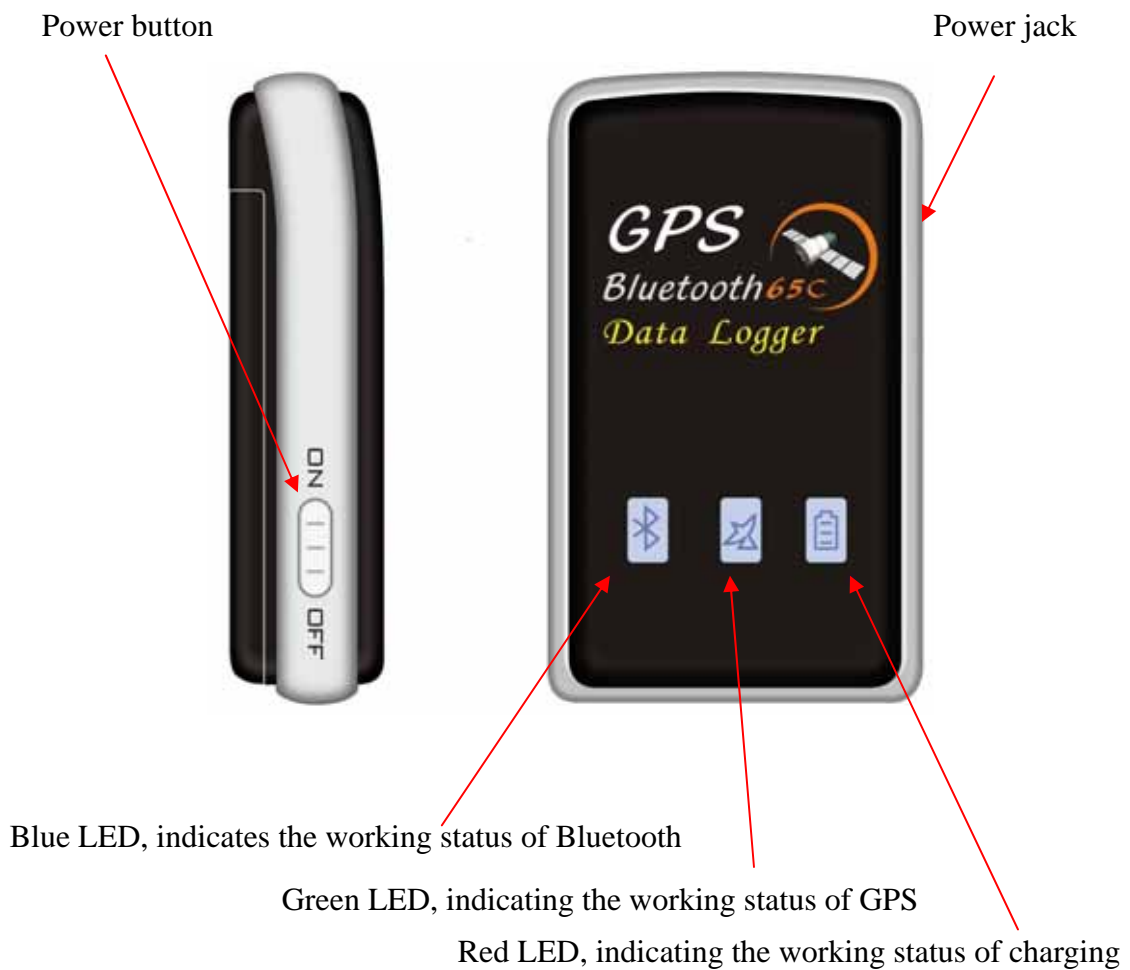
1. Size: 72.8(L) x45.8 (W) x18.8 (H) mm

Wight : 70g

2. Packing list

- | | |
|------------------------------------|---|
| 1. Main unit | 1 |
| 2. Chargeable li-battery | 1 |
| 3. User's manual | 1 |
| 4. Home charger (or Car charger) | 1 |

3. Description



4. LED status

LED	Status	Description
Green LED	Three second a flash	GPS position no fixed
	One second a flash	GPS position fixed
Blue LED	Fast flash indicates	Bluetooth in stand-by mode
	Slow flash indicates	Bluetooth in connection
Red LED	Constant on	Indicates: it is under charging
	Off	Charging is completed

III Operation Instruction

1. Load battery

Open the cover of battery door, and load the battery in right direction. Close the battery door...

2. Charge

Plug the AC end of the charger into main power supply socket. Plug the DC charger into the hole on the product. Then, the red LED turns on, indicating it is charging. In about 2.5hr, red LED turns off and the charger is completed.

Note: To maximize the lifetime of the battery, please charge it continuously for at least 10 hr for the first time.

3. Bluetooth dongle

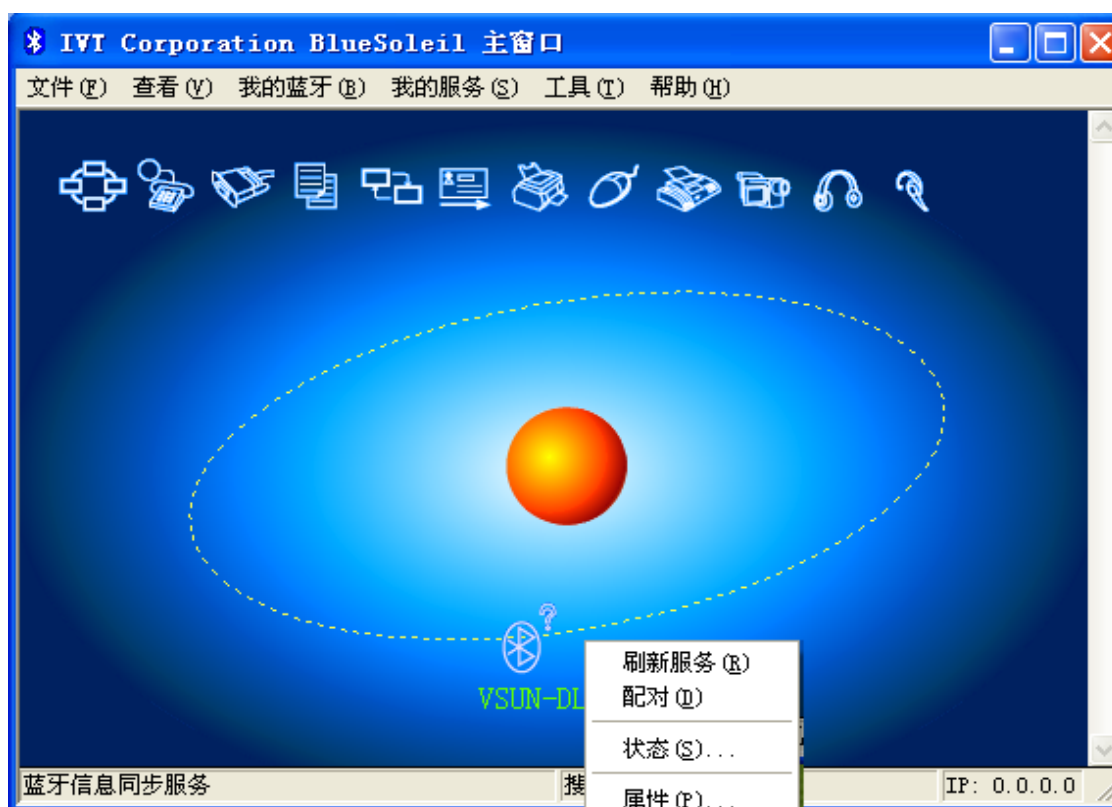
If there is no Bluetooth dongle, you need to buy Bluetooth dongle. When you purchase Bluetooth dongle, the business will give you a Manual, be sure to read carefully.

4. Set up wireless connection

When 38KM's power is on, the green LED turns on, indicating the state of location. Blue LED swiftly flashes, indicating that it enters to matching state.

Connect to Bluetooth with your computer's USB port, then, open the BlueSoleil software (Simple to use the BlueSoleil software, you can view the Track Tagger's self-help documents; the details can view the BlueSoleil software's self-help documents) on the computer, then, you input search command on your Bluetooth device. When it is searched out, select "BTGP-38DL" and then input the code"0000", so that the matching is complete.

Based on energy saving considerations, when used in the track of storage, Bluetooth does not work, five minutes after the start-up did not establish a connection, automatically go into standby status. When the Bluetooth connection to be established, according to the short boot into the power key to matching state.



IV View the track records

1. First, install the Track Tagger software in the CD-ROM, and then open the Track Tagger software, read the log, decompress the log file. (Track Tagger software, you can view the help documents of the software)
2. Install the Google Earth software. (The software in the CD-ROM, if installed Google Earth can omit this step)
3. Double-click the decompression of kml file, you can see the red curve track on the Google Earth (Chart follows)

